

MANSFIELD
PERFORMING ARTS CENTRE

TECHNICAL
MANUAL

Access: By arrangement with Mansfield Secondary College.

Ph: 5775 2022

Seating Capacity: 250

Sound & Lighting technicians can be employed through the PAC
Committee of Management if the hirer does not have own technician.
Ph: 5775 2022

AUDIO

Eurodesk MX3282 (see Appendix 1)
Graphic Equaliser
CD Player

2 x JBL Powered Speakers (EON 15) – mounted side-walls
1x Turbo Sound Speaker – mounted centre prescenum
1x JBL Powered Speaker (EON15) – portable (foldback)
2 x Yamaha 15” 2-way Horn Loaded

2 x mic inputs on Bridge
2 x mic inputs floor centre auditorium
4 x mic inputs floor stage front (trap)
multiple inputs PS, OP & Stage back

Microphones

1 Shure 57 Mic
2 Shure vocal Mics
3 Shotgun Mics (Sennheiser)
2 Shotguns (Long) AKG 900

Various Mic Leads
(including 15/20 Mts Foloverhead)
4 x 15amp Speaker Leads

6 Mic Stands

12 Channel Belde4 multicore
12 Channel Stage Box

Intercom System

Base station at Control Booth with 3 additional belt packs & headsets
(prompt side, opposite prompt and green room).
Backstage/foyer sound available through desk.

Loop Amplifier

Installed for the hearing impaired.

Video

Cables installed from Control Booth to Green Room.

LIGHTING

10 x 3PH 40amp outlets
DMX 1 & 2 and C

Jands Instinct 60 (60 Channel DMX Desk) with manual
2 x 12 Channel (2.4kw per channel) JSC tour series dimmers
6 x ProLite Quad eyes. Gelled 12 Blue, 6 Red, 6 Green
30 Circuit patch panel O.P. Side
3 O.H. LX Bars. 10 circuits each bar
2 F.O.H. LX Bars
(1st F.O.H. with walkway, ladder access required for 2nd F.O.H.)

Lantern Inventory

All with Barndoors and gelframes where required except no barndoors for th
2 Fresnels
Selecon 2 x 650w Pacific Zoom with transparency holders
Selecon 4 x 650w Axial Zoom
Selecon 6 x 650w Acclaim PC's
2 x 500w Fresnels
4 x PAR 56
2 x 500w Leko Profile
2 x 1000w Leko Profile

STAGE AREA

Orchestra Pit:

Removable Panels (see Appendix 2)

Drapes:

Legs and borders, cyclorama and backdrop with crossover behind, centre
curtain at mid-tab.
N.B. No house curtain.

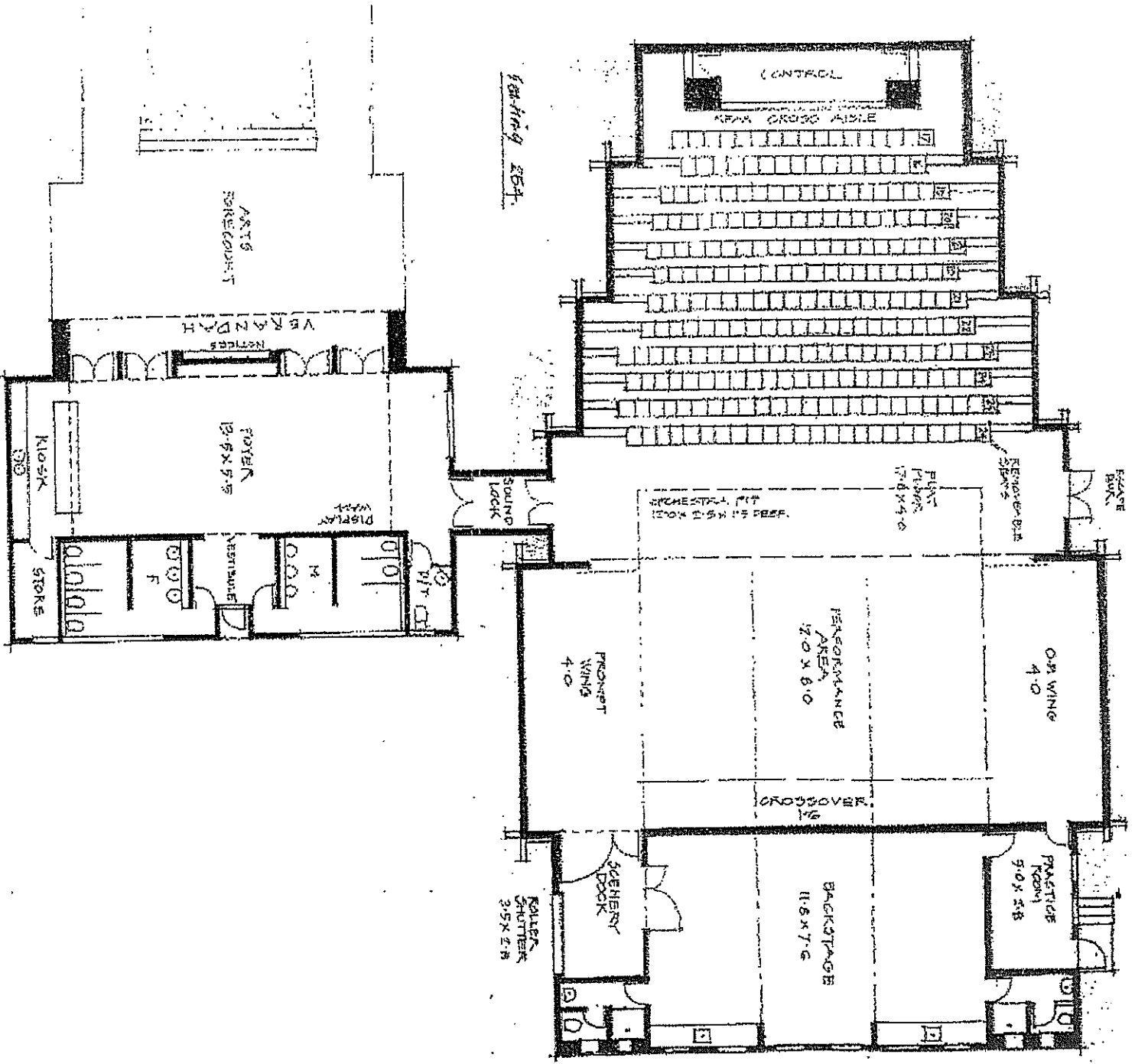
Dressing Room:

Large area (see Appendix 2) with mirrors and lights, separate heating, toilets
and showers.

EURODESK®

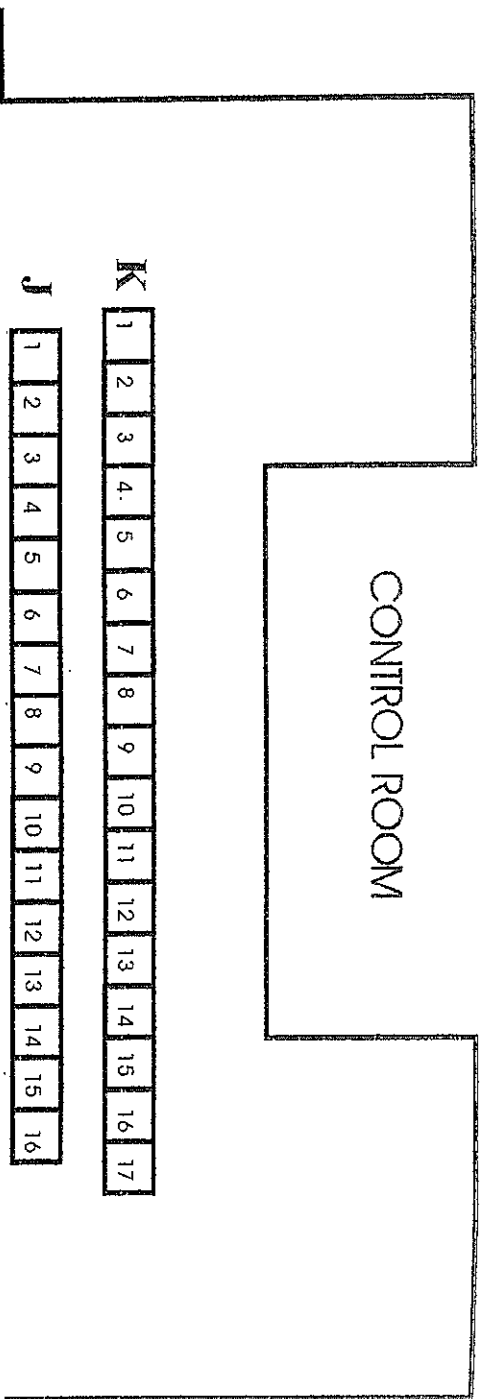
Professional 32-channel 8-bus recording & live-mixing console in ultra low-noise design

- ▲ 32 microphone/line inputs, 24 mono and 4 stereo
- ▲ Ultra low-noise, discrete microphone preamps with +48 V phantom power and switchable low-cut filter
- ▲ 32 balanced line inputs and 24 balanced XLR microphone inputs with gold-plated contact surface
- ▲ 8 subgroups equipped with independent panpots, separate soloing, main mix switches and individual insert sockets
- ▲ 8 master aux sends with gain control and soloing function
- ▲ 4 multifunctional stereo aux returns featuring individual level and pan controls, solo and routing switches
- ▲ Ultra-musical original EURODESK 4-band EQ (stereo channels) and 3-band EQ with semi-parametric mids (mono channels)
- ▲ 4 pre/post fader switchable aux sends, two permanent pre fader and two permanent post fader located aux sends for maximum flexibility of monitoring functions and effects routing
- ▲ Insert facility on every single mono channel, subgroup and main channel
- ▲ Clear and easy comprehensible designed as split console, input and main sections divided
- ▲ State of the art 4580 ICs and high-quality components guarantee crystal-clear audio performance and excellent noise figures
- ▲ RCA sockets for 2-track recorders (input and output), input assignable to main mix or monitor
- ▲ Extremely high headroom—offering more dynamic range
- ▲ External power supply design provides endless power resources, superior transient response and humfree audio
- ▲ Balanced inputs and main outputs for highest possible signal quality
- ▲ LED indicators for mute, solo in place and PFL-solo functions
- ▲ Individual outputs for main mix, control room and headphones
- ▲ Extremely versatile headphones and talkback section
- ▲ High-precision, 8-digit LED metering device for input channels, main mix and subgroups
- ▲ Highest quality faders for main mix, channels and subgroups as well as sealed potentiometers
- ▲ BNC-connector for 12 V gooseneck lights
- ▲ Extremely rugged construction ensures long life even under the most demanding conditions
- ▲ Manufactured under ISO9000 certified management system



*Manufactured Community
Arts Center
Plan*

WILLIAMS ROSS ARCHITECTS



K

1	2	3	4	5	6	7	8	9	10	11	12	13	14	15	16	17
---	---	---	---	---	---	---	---	---	----	----	----	----	----	----	----	----

J

1	2	3	4	5	6	7	8	9	10	11	12	13	14	15	16
---	---	---	---	---	---	---	---	---	----	----	----	----	----	----	----

I

1	2	3	4	5	6	7	8	9	10	11	12	13	14	15	16	17	18	19
---	---	---	---	---	---	---	---	---	----	----	----	----	----	----	----	----	----	----

H

1	2	3	4	5	6	7	8	9	10	11	12	13	14	15	16	17	18	19	20
---	---	---	---	---	---	---	---	---	----	----	----	----	----	----	----	----	----	----	----

G

1	2	3	4	5	6	7	8	9	10	11	12	13	14	15	16	17	18	19	20	21
---	---	---	---	---	---	---	---	---	----	----	----	----	----	----	----	----	----	----	----	----

F

1	2	3	4	5	6	7	8	9	10	11	12	13	14	15	16	17	18	19	20
---	---	---	---	---	---	---	---	---	----	----	----	----	----	----	----	----	----	----	----

E

1	2	3	4	5	6	7	8	9	10	11	12	13	14	15	16	17	18	19	20	21
---	---	---	---	---	---	---	---	---	----	----	----	----	----	----	----	----	----	----	----	----

D

1	2	3	4	5	6	7	8	9	10	11	12	13	14	15	16	17	18	19	20	21	22
---	---	---	---	---	---	---	---	---	----	----	----	----	----	----	----	----	----	----	----	----	----

C

1	2	3	4	5	6	7	8	9	10	11	12	13	14	15	16	17	18	19	20	21	22	23
---	---	---	---	---	---	---	---	---	----	----	----	----	----	----	----	----	----	----	----	----	----	----

B

1	2	3	4	5	6	7	8	9	10	11	12	13	14	15	16	17	18	19	20	21	22	23	24
---	---	---	---	---	---	---	---	---	----	----	----	----	----	----	----	----	----	----	----	----	----	----	----

A

1	2	3	4	5	6	7	8	9	10	11	12	13	14	15	16	17	18	19	20	21	22	23
---	---	---	---	---	---	---	---	---	----	----	----	----	----	----	----	----	----	----	----	----	----	----

