

MANSFIELD
PERFORMING ARTS CENTRE

TECHNICAL
MANUAL

Access: By arrangement with Mansfield Secondary College.
Ph: 5775 2022

Seating Capacity: 250

Sound & Lighting technicians can be employed through the PAC
Committee of Management if the hirer does not have own technician.
Ph: 5775 2022

AUDIO

Eurodesk MX3282 (see Appendix 1)
Graphic Equaliser
CD Player

2 x JBL Powered Speakers (EON 15)– mounted side-walls
1x Turbo Sound Speaker – mounted centre prescenum
1x JBL Powered Speaker (EON15) – portable (foldback)
2 x Yamaha 15” 2-way Horn Loaded

2 x mic inputs on Bridge
2 x mic inputs floor centre auditorium
4 x mic inputs floor stage front (trap)
multiple inputs PS, OP & Stage back

Microphones

1 Shure 57 Mic
2 Shure vocal Mics
3 Shotgun Mics (Sennheiser)
2 Shotguns (Long) AKG 900

Various Mic Leads
(including 15/20 Mts Folouerhead)
4 x 15amp Speaker Leads

6 Mic Stands

12 Channel Belde4 multicore
12 Channel Stage Box

Intercom System

Base station at Control Booth with 3 additional belt packs & headsets
(prompt side, opposite prompt and green room).
Backstage/foyer sound available through desk.

Loop Amplifier

Installed for the hearing impaired.

Video

Cables installed from Control Booth to Green Room.

LIGHTING

10 x 3PH 40amp outlets
DMX 1 & 2 and C

Jands Instinct 60 (60 Channel DMX Desk) with manual
2 x 12 Channel (2.4kw per channel) JSC tour series dimmers
6 x Prolite Quad cys. Gelled 12 Blue, 6 Red, 6 Green
30 Circuit patch panel O.P. Side
3 O.H. LX Bars. 10 circuits each bar
2 F.O.H. LX Bars
(1st F.O.H. with walkway, ladder access required for 2nd F.O.H.)

Lantern Inventory

All with Barndoors and gelframes where required except no barndoors for th
2 Fresnels

Selecon 2 x 650w Pacific Zoom with transparency holders

Selecon 4 x 650w Axial Zoom

Selecon 6 x 650w Acclaim PC's

2 x 500w Fresnels

4 x PAR 56

2 x 500w Leko Profile

2 x 1000w Leko Profile

STAGE AREA

Orchestra Pit:

Removable Panels (see Appendix 2)

Drapes:

Legs and borders, cyclorama and backdrop with crossover behind, centre
curtain at mid-tab.

N.B. No house curtain.

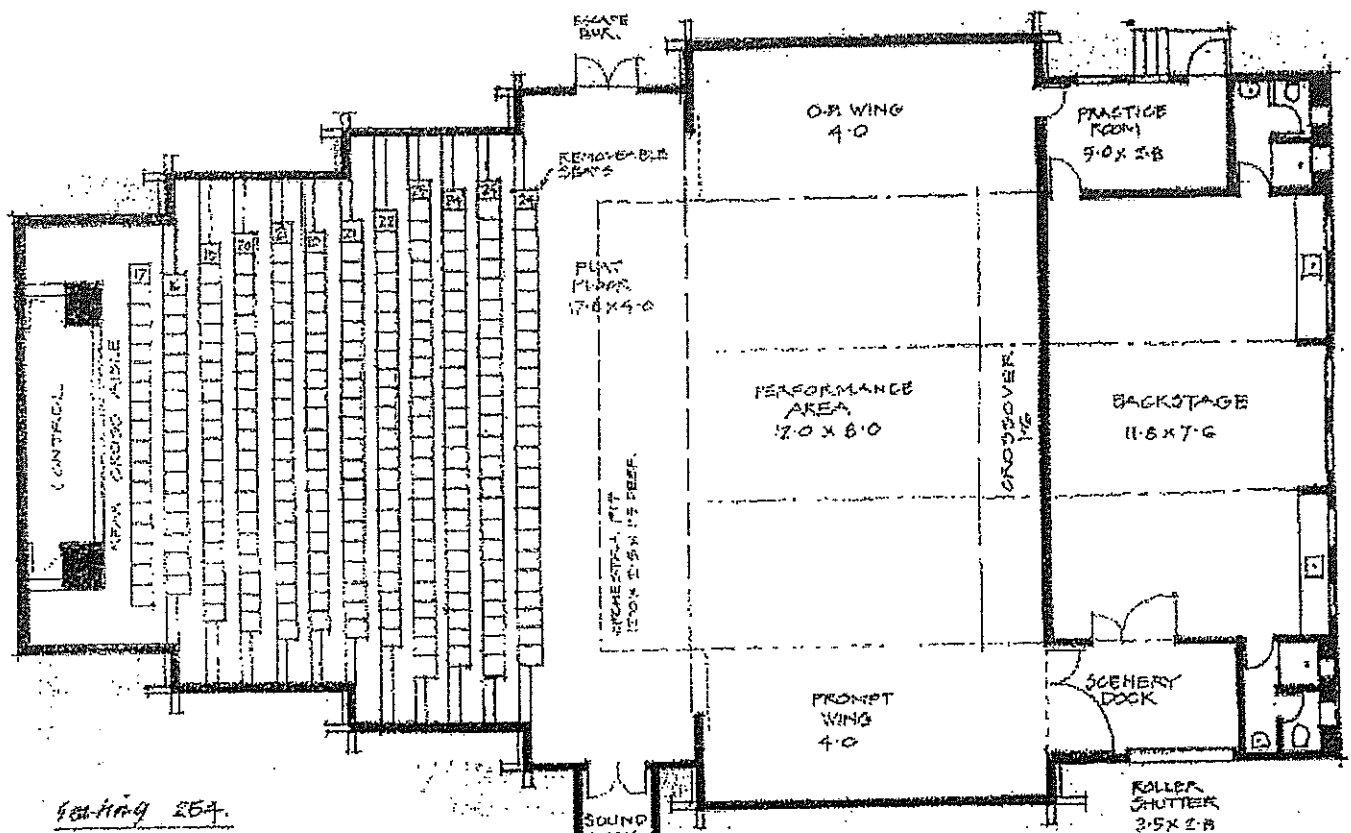
Dressing Room:

Large area (see Appendix 2) with mirrors and lights, separate heating, toilets
and showers.

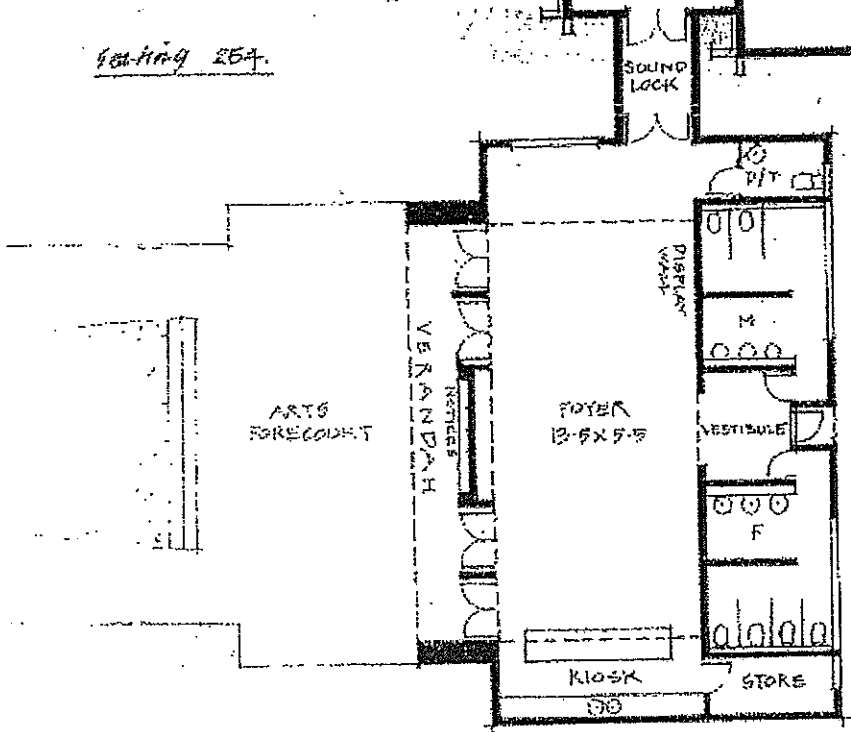
EURODESK®

Professional 32-channel 8-bus recording & live-mixing console in ultra low-noise design

- ▲ 32 microphone/line inputs, 24 mono and 4 stereo
- ▲ Ultra low-noise, discrete microphone preamps with +48 V phantom power and switchable low-cut filter
- ▲ 32 balanced line inputs and 24 balanced XLR microphone inputs with gold-plated contact surface
- ▲ 8 subgroups equipped with independent panpots, separate soloing, main mix switches and individual insert sockets
- ▲ 8 master aux sends with gain control and soloing function
- ▲ 4 multifunctional stereo aux returns featuring individual level and pan controls, solo and routing switches
- ▲ Ultra-musical original EURODESK 4-band EQ (stereo channels) and 3-band EQ with semi-parametric mids (mono channels)
- ▲ 4 pre/post fader switchable aux sends, two permanent pre fader and two permanent post fader located aux sends for maximum flexibility of monitoring functions and effects routing
- ▲ Insert facility on every single mono channel, subgroup and main channel
- ▲ Clear and easy comprehensible designed as split console, input and main sections divided
- ▲ State of the art 4580 ICs and high-quality components guarantee crystal-clear audio performance and excellent noise figures
- ▲ RCA sockets for 2-track recorders (input and output), input assignable to main mix or monitor
- ▲ Extremely high headroom—offering more dynamic range
- ▲ External power supply design provides endless power resources, superior transient response and humfree audio
- ▲ Balanced inputs and main outputs for highest possible signal quality
- ▲ LED indicators for mute, solo in place and PFL-solo functions
- ▲ Individual outputs for main mix, control room and headphones
- ▲ Extremely versatile headphones and talkback section
- ▲ High-precision, 8-digit LED metering device for input channels, main mix and subgroups
- ▲ Highest quality faders for main mix, channels and subgroups as well as sealed potentiometers
- ▲ BNC-connector for 12 V gooseneck lights
- ▲ Extremely rugged construction ensures long life even under the most demanding conditions
- ▲ Manufactured under ISO9000 certified management system



Seating 257.



Manitoba Community
Arts Centre
Plan

SEATING 230

CONTROL ROOM

K 1 2 3 4 5 6 7 8 9 10 11 12 13 14 15 16 17

J 1 2 3 4 5 6 7 8 9 10 11 12 13 14 15 16

I 1 2 3 4 5 6 7 8 9 10 11 12 13 14 15 16 17 18 19

H 1 2 3 4 5 6 7 8 9 10 11 12 13 14 15 16 17 18 19 20

G 1 2 3 4 5 6 7 8 9 10 11 12 13 14 15 16 17 18 19 20 21

F 1 2 3 4 5 6 7 8 9 10 11 12 13 14 15 16 17 18 19 20

E 1 2 3 4 5 6 7 8 9 10 11 12 13 14 15 16 17 18 19 20 21

D 1 2 3 4 5 6 7 8 9 10 11 12 13 14 15 16 17 18 19 20 21 22

C 1 2 3 4 5 6 7 8 9 10 11 12 13 14 15 16 17 18 19 20 21 22 23

B 1 2 3 4 5 6 7 8 9 10 11 12 13 14 15 16 17 18 19 20 21 22 23 24

A 1 2 3 4 5 6 7 8 9 10 11 12 13 14 15 16 17 18 19 20 21 22 23

FOYER

ORCHESTRA PIT

EMERGENCY EXIT

